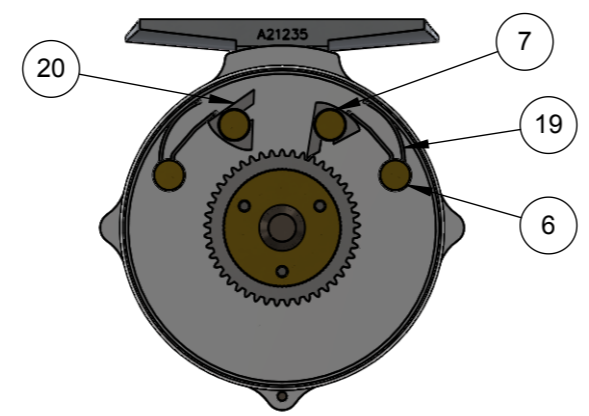


THE COPYRIGHT IN THIS DOCUMENT IS THE PROPERTY OF HARDY AND GREYS LTD. THE DOCUMENT IS SUPPLIED ON THE EXPRESS TERMS THAT IT IS TO BE TREATED IN CONFIDENCE AND THAT IT MAY NOT BE COPIED, USED OR DISCLOSED TO ANYONE OTHER THAN THE INTENDED RECIPIENT EXCEPT AS AUTHORISED IN WRITING BY HARDY AND GREYS LTD.

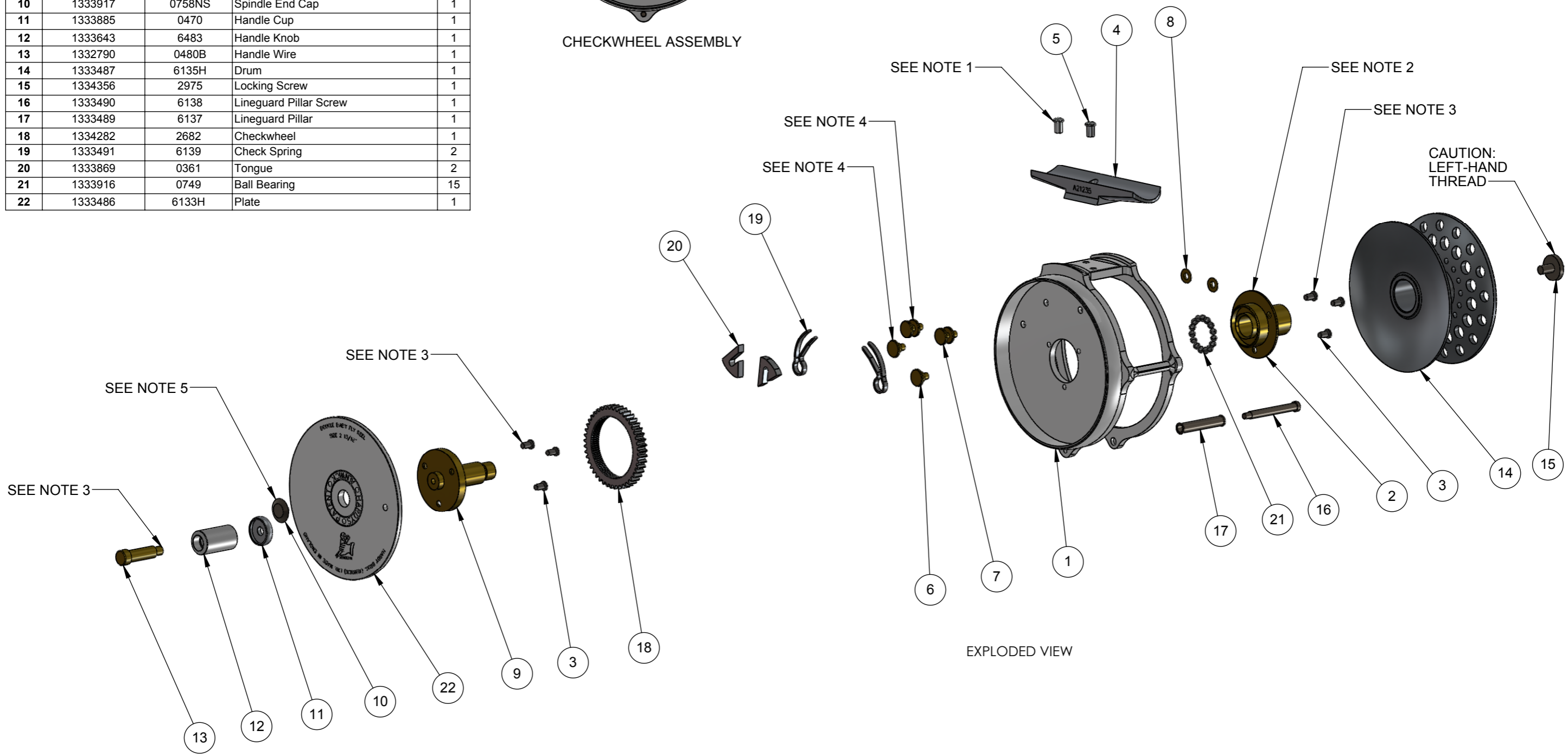
PRODUCT CODE: HEB010				
ITEM NO.	PART NUMBER	(H&G) PART NUMBER	DESCRIPTION	QTY.
1	1339962	6134H	Frame	1
2	1333178	2075	Frame Bush	1
3	1334286	2782	framebush screw	6
4	1333542	6250	Reelback	1
5	1334256	246S	Reelback Screw	2
6	1333831	0140B	Small Spring Stud	2
7	1333829	0128B	Small Tongue Stud	2
8	1333851	0243B	Small Tongue Stud Washer	2
9	1333179	2076	Plate Bush	1
10	1333917	0758NS	Spindle End Cap	1
11	1333885	0470	Handle Cup	1
12	1333643	6483	Handle Knob	1
13	1332790	0480B	Handle Wire	1
14	1333487	6135H	Drum	1
15	1334356	2975	Locking Screw	1
16	1333490	6138	Lineguard Pillar Screw	1
17	1333489	6137	Lineguard Pillar	1
18	1334282	2682	Checkwheel	1
19	1333491	6139	Check Spring	2
20	1333869	0361	Tongue	2
21	1333916	0749	Ball Bearing	15
22	1333486	6133H	Plate	1



CHECKWHEEL ASSEMBLY

NOTES

1. THREAD LOCK SCREWS IN POSITION.
2. BALL BEARINGS BURNISHED INTO PLACE, FORMING TOOL REQUIRED.
3. FORMING TOOL AND RIVET TOOL REQUIRED.
4. BURNISHING TOOL REQUIRED.
5. PRESSED IN PLACE.



EXPLODED VIEW

**REPAIR/ASSEMBLY VERSION**

REVISIONS				
REV.	NOTES	DATE	DRAWN	APP.
D	FINISHED PRODUCT PART NUMBER AND PART NUMBER COLUMN ADDED.	05/12/2013	SOM	CN
E	NOTES UPDATED.	17/01/2014	SOM	CN
F	PART NUMBERS ADDED.	01/07/2014	SOM	CN
G	ITEM NO. 3 TEXT UPDATED.	09/07/2014	SOM	CN
H	NOTES UPDATED	10/07/2014	SOM	CN

UNLESS OTHERWISE SPECIFIED  
DO NOT SCALE DRAWING.  
INTERPRET DRAWING AND TOLERANCES AS PER BS8888.  
DIMENSIONS ARE IN MILLIMETERS.  
TOLERANCES TO APPLY ARE:  
LINEAR: 0 ±1 ANGULAR: ±1deg  
0.0 ±0.25  
0.00 ±0.05

DRAWN BY: SOM  
DATE: 24/9/13  
CHECKED BY: CN  
DATE: 24/9/13  
APPROVED: CN  
DATE: 24/9/13  
BS8888  
3RD ANGLE  
PROJECTION

DEBUR AND BREAK SHARP EDGES  
CUSTOMER: N/A  
BRAND: HARDY BROS.  
FINISH: N/A  
BIN: N/A  
MATERIAL: N/A  
MASS: 111g

HARDY & GREYS LIMITED  
*Inspiring people to fail*  
WILLOWBURN, ALNWICK,  
NORTHUMBERLAND, NE66 2PF  
TITLE: BABY BOUGLE HERITAGE REEL 2013 -  
EXPLODED VIEW  
DRAWING NO: N/A  
REV: H  
STATUS: RELEASED  
SCALE: 1:1.5  
A3  
SHEET 1 OF 1